

South Burlington  
School District  
Annual Report  
Card  
2022



**South Burlington School District**  
*We inspire all learners to make  
a difference in the world*

# MISSION STATEMENT

“The mission of the South Burlington School District, a community committed to excellence in education, is to ensure that each student possesses the knowledge, skills, and character to create a successful and responsible life. We will do this by building safe, caring, and challenging learning environments, fostering family and community partnerships, utilizing global resources, and inspiring life-long learning.”

## South Burlington School

### Board Members

#### General E-mail:

[schoolboard@sbschools.net](mailto:schoolboard@sbschools.net)

General Voicemail: 652-7476

Alex McHenry-Chair

[amchenry@sbschools.net](mailto:amchenry@sbschools.net)

Chelsea Tillinghast-Clerk

[ctillinghast@sbschools.net](mailto:ctillinghast@sbschools.net)

Kate Bailey

[kbailey@sbschools.net](mailto:kbailey@sbschools.net)

Laura Williams

[llwilliams@sbschools.net](mailto:llwilliams@sbschools.net)

Bryan Companion

[bcompanion@sbschools.net](mailto:bcompanion@sbschools.net)

## Table of Contents

<i>Mission Statement</i>	2
<i>Enrollments</i>	3
<i>Individual Program Updates</i>	4-6
<i>Assessment Data</i>	7-17
<i>High School Data</i>	18-21
<i>District Awards &amp; Achievements</i>	22-23



Please visit our District website at [www.sbschools.net](http://www.sbschools.net) to view the Global Ends Policy, found by going to the Policies and Procedures tab. The school board has identified four goal areas for students to be **ready for their next step**. They are: disposition for life-long learning, academic proficiency, personal development, and citizenship.

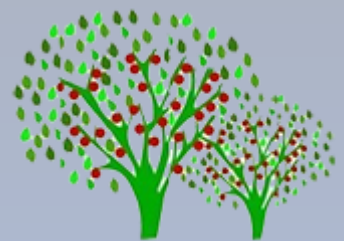
# 2021-2022 ENROLLMENT



School	Enrollment
South Burlington Preschool (Including Partners)	274
Rick Marcotte Central School	394
Orchard School	420
Gertrude Chamberlin School	249
Frederick H. Tuttle Middle School	496
South Burlington High School*	918
Total Enrollment <small>* Includes Tuition Students</small>	2751



Year	* Tuition Students
2021-2022	189



School	Average Student/Teacher Ratio (Literacy, Math, Science, Social Studies)
Chamberlin School	15.6
Orchard School	19.1
Rick Marcotte Central School	19.7
Frederick H. Tuttle Middle School	19.8
South Burlington High School	24.1



Other Enrollment Type	Students
BTC/CTE	35
Dual Enrollment	77
Early College	13



# SCHOOL'S OUT!



South Burlington School District's after school program, "School's Out!" has been offering high quality after school experiences for South Burlington students since 2001. School's Out has always strived to stay true to its mission: School's Out will provide children a safe environment where they will be given the opportunity to express themselves and develop socially, physically, artistically, and creatively through a program that nurtures and respects the uniqueness of every child.

Enrollment was up from the 2020-2021 school year with a total of 400 students from Early Education through Middle School for the 2021-2022 school year. In April 2022 we reopened the FHTMS program, busing 5th graders over to join the 6th-8th grade students who previously were busing to the elementary schools for afterschool programming. We made this change to open up space at the elementary schools to bring students in off our waitlist.

The School's Out Early Education program is in its 5th year and still supporting the district's partial day preschool classrooms with "wrap around" childcare. School's Out continues to offer Vacation and Summer Camp opportunities for all ages. The School's Out website can be found at [www.sbschoolsout.com](http://www.sbschoolsout.com) and a direct link can be found on the district's home page. The website is an excellent tool to learn more about the School's Out program.



# STUDENT SUPPORT SERVICES

## ENROLLMENTS AND SPECIAL PROGRAMS

Year	Total Students Enrolled K-12	Special Education Child Count*	Section 504**	English Language Learners	Total In Programs	% of SBSD Students Receiving Services
2021-2022	2477	403	147	151	701	28.3%
2020-2021	2634	397	136	165	698	26.5%
2019-2020	2491	377	126	235*	738	29.6%
2018-2019	2476	347	147	169	663	27%
2017-2018	2473	338	141	196	675	27%
2016-2017	2458	322	81	193	596	24.2%
2015-2016	2320	280	75	210	565	24.3%

\***Child Count** includes students who are identified as disabled under state and federal law and who require unique instruction.

\*\***Section 504** includes students with disabilities who do not require unique instruction. They are legally entitled to and receive special accommodations in the classroom, such as special seating and modified tests.

Student Support Services has a Multi-Tiered System of Educational Supports (MTSS) to efficiently and effectively monitor student progress. Teams of professionals meet regularly to review student progress and develop strategies that can be implemented universally in the classroom as well as develop intervention plans for specific targeted or intensive interventions. The goal is for every student to participate fully in universal instruction and to be provided with optimal learning environments. The MTSS process is: a problem solving process; a school-wide instruction and intervention system, both behavioral and academic; a shared responsibility; and a defined process using assessments to make data-based decisions for student success on a rapid cycle for accelerated learning.

\***Multilingual Learners** – includes students who are being monitored.

# PRESCHOOL (AGES 3-5)

South Burlington is part of the Early Learning Project in Chittenden County. These preschool partnerships currently support 274 preschoolers in accessing quality preschool programs. The District continues to collaborate with Child Care Resource to implement the South Burlington Early Childhood Plan. South Burlington continues to offer an Essential Early Education Program (EEE) for children ages 3 through 5 experiencing developmental delays or those who have a medical condition that may interfere with learning and future success in the home, school, and community. This special education program provides specialized instruction to meet the unique needs of the district's 44 students who are currently enrolled.



## Multilingual Learner (ML)

With more than 40 languages spoken within South Burlington's borders, it has become one of the most diverse towns within Vermont. South Burlington has a vibrant Multilingual Learner (ML) Program which is served by 6.8 (FTE) very talented and committed educators. This program was formerly known as ELL (English Language Learners). We recognize that these students are not only developing English skills but becoming biliterate or, in some cases, multilingual learners. Because multilingual learners make up a growing percentage of the student population, South Burlington schools benefit from this richness of languages and cultures.

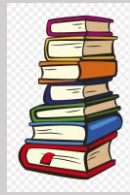
The overall number of students served has increased, with a significant increase at all grade levels. Growth is expected to continue across the district as we enroll students from Afghanistan, Ukraine, Nepal, Dominican Republic, Somalia, and Sudan.

We have supported experiences for our EL students in science and social studies courses. We use a model of inclusion with our ML students that is seen as a model of inclusion and success for all students. We provide tutoring for students during the school year and extended school services during the summer. Summer services include our summer school program for students in grades K-5, our district run middle level summer school program, and individual tutoring of some high school students.

# ASSESSMENTS

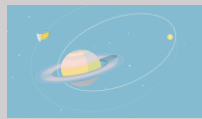
## Early Reading

- ❖ Local Early Literacy Assessment (Gr. K, 1, 2)  
*September and May*
- ❖ Local—Phonological Assessment (Gr. K, 1, 2) *September and May*



## English Language Arts

- ❖ Local Performance Assessment Tasks (Gr. 9-10) Yearly
- ❖ Smarter Balanced Assessment Consortium (Gr. 3-8, 9) *March—June*
- ❖ Writing Prompt (Gr. K-5) *January*
- ❖ Formative Assessment System for Teachers (FAST) aReading (Gr. 3-9) *September, January, and May*
- ❖ Scholastic Aptitude Test I (High School) *Throughout the School Year*
- ❖ Scholastic Aptitude Test (all Gr. 11 students) *Spring*
- ❖ Advanced Placement English Language and Composition (High School) *May*
- ❖ Advanced Placement English Literature and Composition (High School) *May*
- ❖ American College Test (High School) *Throughout the School Year*
- ❖ American College Test/PLAN (Gr. 10) *October*
- ❖ American College Test (ACT) (all Gr. 12 students) *Fall*



## History/Social Studies

- ❖ Local Performance Assessment Tasks (Gr. 9-10) *Yearly*
- ❖ Advanced Placement European History (High School) *May*
- ❖ Advanced Placement US Gov't & Politics (High School) *May*
- ❖ Advanced Placement Psychology (High School) *May*
- ❖ American College Test (ACT) (all Gr. 12 students) *Fall*



## Mathematics

- ❖ Math Assessments for Data Wall (Gr. K-5)
- ❖ Local Performance Assessment Tasks (Gr. 9-10) Yearly
- ❖ Smarter Balanced Assessment Consortium (Gr. 3-8, 9) *March—June*
- ❖ Formative Assessment System for Teachers (FAST) eMath (Gr. K-8) *September, January, June*
- ❖ Scholastic Aptitude Test I (High School) *Throughout the School Year*
- ❖ Advanced Placement Calculus AB (High School) *May*
- ❖ Advanced Placement Calculus BC (High School) *May*
- ❖ Advanced Placement Computer Science (High School) *May*
- ❖ Advanced Placement Statistics (High School) *May*
- ❖ American College Test (ACT) (All Gr. 12 students) *Fall*

## Science

- ❖ Local Performance Assessment Tasks (Gr. 9-12) *Fall*
- ❖ VT Science Assessment (VTSA) (Gr. 4, 8, 11) *May*
- ❖ Science Inquiry Task (Gr. K-5) *Throughout the School Year*
- ❖ Advanced Placement Biology (High School) *May*
- ❖ Advanced Placement Chemistry (High School) *May*
- ❖ Advanced Placement Env. Sciences (High School) *May*
- ❖ Advanced Placement Physics (High School) *May*
- ❖ American College Test (ACT) (all Gr. 12 students) *Fall*

## World Language

- ❖ Local Performance Assessment Tasks (Gr. 9-12) Yearly
- ❖ World Language Assessment (Gr. 8, 10) *May and June*
- ❖ Advanced Placement French (High School) *May*
- ❖ Advanced Placement Spanish (High School) *May*

# ASSESSMENTS—STATE



## Smarter Balanced Assessment Consortium (SBAC)

### Grade 3 Results

SBAC testing did not take place in the 2019-2020 school year due to the COVID-19 pandemic.

SBAC Language Arts Grade 3	2017-18	2018-19	2019-20	2020-21	2021-22
South Burlington	63%	55%	NA	52%	59%
Vermont	50%	50%	NA	43%	41%

SBAC Language Arts Grade 3	2017-18	2018-19	2019-20	2020-21	2021-22
SB Male	62%	55%	NA	50%	54%
SB Female	72%	59%	NA	59%	64%
SB FRL	38%	28%	NA	27%	39%

SBAC Math Grade 3	2017-18	2018-19	2019-20	2020-21	2021-22
South Burlington	62%	59%	NA	49%	66%
Vermont	52%	53%	NA	48%	43%

SBAC Math Grade 3	2017-18	2018-19	2019-20	2020-21	2021-22
SB Male	64%	66%	NA	55%	68%
SB Female	64%	49%	NA	46%	64%
SB FRL	30%	20%	NA	23%	45%



## Smarter Balanced Assessment Consortium (SBAC) Grade 4 Results

SBAC testing did not take place in the 2019-2020 school year due to the COVID-19 pandemic.

SBAC Language Arts Grade 4	2017-18	2018-19	2019-20	2020-21	2021-22
South Burlington	66%	57%	NA	57%	58%
Vermont	53%	51%	NA	45%	44%

SBAC Language Arts Grade 4	2017-18	2018-19	2019-20	2020-21	2021-22
SB Male	70%	55%	NA	57%	58%
SB Female	60%	68%	NA	53%	58%
SB FRL	56%	24%	NA	26%	29%

SBAC Math Grade 4	2017-18	2018-19	2019-20	2020-21	2021-22
South Burlington	62%	64%	NA	54%	47%
Vermont	49%	47%	NA	38%	38%

SBAC Math Grade 4	2017-18	2018-19	2019-20	2020-21	2021-22
SB Male	71%	68%	NA	59%	56%
SB Female	52%	59%	NA	45%	42%
SB FRL	44%	29%	NA	34%	16%

# ASSESSMENTS—STATE



## Smarter Balanced Assessment Consortium (SBAC) Grade 5 Results

SBAC testing did not take place in the 2019-2020 school year due to the COVID-19 pandemic.

SBAC Language Arts Grade 5	2017-18	2018-19	2019-20	2020-21	2021-22
South Burlington	70%	70%	NA	59%	66%
Vermont	55%	55%	NA	49%	46%

SBAC Language Arts Grade 5	2017-18	2018-19	2019-20	2020-21	2021-22
SB Male	63%	72%	NA	56%	70%
SB Female	85%	67%	NA	61%	61%
SB FRL	51%	57%	NA	27%	45%

SBAC Math Grade 5	2017-18	2018-19	2019-20	2020-21	2021-22
South Burlington	61%	59%	NA	41%	58%
Vermont	42%	42%	NA	30%	32%

SBAC Math Grade 5	2017-18	2018-19	2019-20	2020-21	2021-22
SB Male	70%	69%	NA	50%	68%
SB Female	55%	45%	NA	32%	45%
SB FRL	47%	50%	NA	14%	38%



## Smarter Balanced Assessment Consortium (SBAC) Grade 6 Results

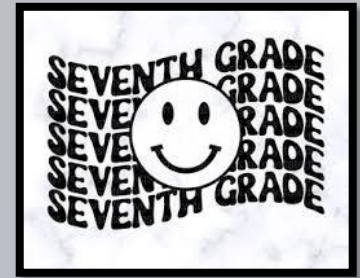
SBAC testing did not take place in the 2019-2020 school year due to the COVID-19 pandemic.

SBAC Language Arts Grade 6	2017-18	2018-19	2019-20	2020-21	2021-22
South Burlington	66%	63%	NA	50%	49%
Vermont	53%	52%	NA	44%	43%

SBAC Language Arts Grade 6	2017-18	2018-19	2019-20	2020-21	2021-22
SB Male	55%	57%	NA	44%	41%
SB Female	73%	73%	NA	58%	56%
SB FRL	56%	41%	NA	18%	19%

SBAC Math Grade 6	2017-18	2018-19	2019-20	2020-21	2021-22
South Burlington	53%	46%	NA	37%	41%
Vermont	41%	38%	NA	28%	30%

SBAC Math Grade 6	2017-18	2018-19	2019-20	2020-21	2021-22
SB Male	47%	51%	NA	35%	41%
SB Female	55%	36%	NA	40%	40%
SB FRL	52%	17%	NA	7%	8%



## Smarter Balanced Assessment Consortium (SBAC) Grade 7 Results

SBAC testing did not take place in the 2019-2020 school year due to the COVID-19 pandemic.

SBAC Language Arts Grade 7	2017-18	2018-19	2019-20	2020-21	2021-22
South Burlington	76%	73%	NA	60%	64%
Vermont	57%	57%	NA	52%	45%

SBAC Language Arts Grade 7	2017-18	2018-19	2019-20	2020-21	2021-22
SB Male	75%	58%	NA	54%	56%
SB Female	80%	89%	NA	62%	72%
SB FRL	56%	59%	NA	34%	29%

SBAC Math Grade 7	2017-18	2018-19	2019-20	2020-21	2021-22
South Burlington	62%	53%	NA	34%	50%
Vermont	44%	44%	NA	33%	31%

SBAC Math Grade 7	2017-18	2018-19	2019-20	2020-21	2021-22
SB Male	64%	46%	NA	42%	48%
SB Female	56%	57%	NA	28%	52%
SB FRL	38%	33%	NA	12%	23%

## Smarter Balanced Assessment Consortium (SBAC) Grade 8 Results

SBAC testing did not take place in the 2019-2020 school year due to the COVID-19 pandemic.

8th Grade

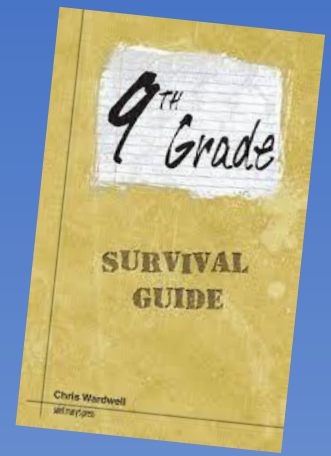
SBAC Language Arts Grade 8	2017-18	2018-19	2019-20	2020-21	2021-22
South Burlington	81%	77%	NA	69%	62%
Vermont	58%	53%	NA	52%	42%

SBAC Language Arts Grade 8	2017-18	2018-19	2019-20	2020-21	2021-22
SB Male	68%	72%	NA	60%	60%
SB Female	90%	84%	NA	81%	63%
SB FRL	42%	55%	NA	44%	40%

SBAC Math Grade 8	2017-18	2018-19	2019-20	2020-21	2021-22
South Burlington	63%	56%	NA	47%	40%
Vermont	43%	40%	NA	32%	28%

SBAC Math Grade 8	2017-18	2018-19	2019-20	2020-21	2021-22
SB Male	60%	60%	NA	49%	43%
SB Female	63%	50%	NA	42%	38%
SB FRL	20%	41%	NA	20%	19%

## Smarter Balanced Assessment Consortium (SBAC) Grade 9 Results



SBAC testing did not take place in the 2019-2020 school year due to the COVID-19 pandemic.

SBAC Language Arts Grade 9	2019-20	2020-21	2021-22
South Burlington	NA	76%	64%
Vermont	NA	55%	45%

SBAC Language Arts Grade 9	2019-20	2020-21	2021-22
SB Male	NA	72%	59%
SB Female	NA	79%	69%
SB FRL	NA	56%	30%

SBAC Math Grade 9	2019-20	2020-21	2021-22
South Burlington	NA	35%	30%
Vermont	NA	30%	26%

SBAC Math Grade 9	2019-20	2020-21	2021-22
SB Male	NA	32%	29%
SB Female	NA	38%	30%
SB FRL	NA	23%	16%

# ASSESSMENTS—STATE

## Vermont Science Assessment (VTSA) Grades 5, 8 and 11



SBAC testing did not take place in the 2019-2020 school year due to the COVID-19 pandemic.

Vermont Science Assessment	2018-2019	2019-2020	2020-21	2021-22
South Burlington (SB) Grade 5	47%	NA	38%	46%
Vermont Grade 5	37%	NA	35%	35%
SB Male Grade 5	56%	NA	35%	52%
SB Female Grade 5	38%	NA	40%	38%
SB FRL Grade 5	20%	NA	19%	21%
South Burlington Grade 8	67%	NA	38%	50%
Vermont Grade 8	39%	NA	35%	30%
SB Male Grade 8	65%	NA	48%	53%
SB Female Grade 8	63%	NA	40%	48%
SB FRL Grade 8	50%	NA	18%	25%
South Burlington Grade 11	59%	NA	71%	52%
Vermont Grade 11	41%	NA	42%	40%
SB Male Grade 11	29%	NA	71%	61%
SB Female Grade 11	30%	NA	70%	43%

# ASSESSMENTS—NATIONAL

## SCHOLASTIC APTITUDE TEST I—School Year Summary 2021-2022



Number of Graduating Seniors	Number who took SAT I	Ratio of Participation
217	163	75%

Ratio of Participation	YEAR	Evidence Based Reading and Writing	Mathematics
		SBHS	SBHS
75%	2021-2022	576	551





## ADVANCED PLACEMENT TESTS

The Advanced Placement (AP) Program provides students with the opportunity to complete college-level studies during high school. Many colleges grant credits to students who successfully complete AP exams. In order to receive college credit, a student must take the AP test. SBHS regularly offers courses to prepare students to pass these exams. Exams in other areas are sometimes given by special request from individuals as students are not required to take a formal AP course in preparation for the exam. The results shown in the table include a few students who prepared independently. **Scores are not provided when there are fewer than 10 students in a course.**

AP exams are scored on a scale from 1 to 5. A score of 3 or higher is considered passing. Students scoring five on more than one test receive commendations from the testing service and many receive additional credit at some colleges.

### 2022 Advanced Placement Test Results

(310 Tests Taken by Students)

Subject	Number of Exams	Average Score	Percent of Exams with Scores of 3 or Higher
Biology	22	3.5	82%
Calculus AB	24	3.13	46%
Calculus BC	-	-	-
Chemistry	-	-	-
Computer Science A	14	3.21	79%
English Language	51	3.14	59%
English Literature	17	3.72	100%
Environmental Science	21	2.59	43%
European History	17	3.41	82%
Physics I	15	2.87	67%
Psychology	62	2.29	39%
Statistics	30	2.9	57%
US Gov't & Politics	28	2.82	75%
<b>Total</b>	<b>310</b>	<b>3.13</b>	<b>61%</b>

- Scores are not provided when there are fewer than 10 students in a course.

# HIGH SCHOOL DATA

## DESTINATIONS OF STUDENTS AFTER GRADUATION

Percentage of Graduating Students Entering Higher Education

	2016	2017	2018	2019	2020	2021	2022
<b>Total</b>	79%	79%	73%	73%	70%	70%	77%

### STUDENTS FROM THE CLASS OF 2022 WERE ACCEPTED AT THE FOLLOWING INSTITUTIONS:

Adelphi University	Fort Lewis College	Regis College	University of Illinois at Urbana-Champaign
Albany College of Pharmacy and Health Sciences	Franklin & Marshall College	Rensselaer Polytechnic Institute	University of Kentucky
American University	Franklin Pierce University	Rice University	University of Maryland (Baltimore County)
Amherst College	Furman University	Rider University	University of Maryland-College Park
Antioch College	George Mason University	Rochester Institute of Technology	University of Massachusetts (Boston)
Antioch University (Seattle)	George Washington University	Rochester Institute of Technology	University of Massachusetts (Amherst)
Arcadia University	Georgetown University	Rocky Mountain College of Art & Design	University of Massachusetts-Dartmouth
Arizona State University (Downtown Phoenix)	Gettysburg College	Roger Williams University	University of Massachusetts (Lowell)
Arizona State University (Main Campus)	Goddard College	Rose-Hulman Institute of Technology	University of Michigan
Babson College	Greenville Technical College	Rowan University	University of New England
Bentley University	Hampshire College	Rutgers University-New Brunswick	University of New Hampshire
Bishop's University	Hobart & William Smith College	SUNY College at Plattsburgh	University of New Haven at Manchester
Boston College	Hofstra University	SUNY College of Technology at Canton	University of New Haven
Boston University	Husson University	SUNY at Albany	University of North Carolina Wilmington
Brandeis University	Ithaca College	SUNY at Binghamton	University of North Carolina at Chapel Hill
Bryant University	James Madison University	Saint Michael's College	University of North Carolina at Charlotte
Brigham Young University-Idaho	Johns Hopkins University	Salve Regina University	University of North Carolina at Greensboro
Brown University	Johnson & Wales University (Providence)	Santa Clara University	University of Oregon
Bryant University	Kansas State University	Savannah College of Art & Design	University of Ottawa
Bucknell University	Keene State College	Scripps College	University of Pittsburgh
California State University (Long Beach)	Kenyon College	Siena College	University of Rhode Island
California State University (Monterey Bay)	Lafayette College	Simmons University	University of Rochester
Carnegie Mellon University	Lehigh University	Simon Fraser University	University of San Francisco
Castleton University	Lesley University	Skidmore College	University of Scranton
Champlain College	Loyola University Chicago	Smith College	University of South Carolina
Chapman University	Loyola University Maryland	Southern Methodist University	University of Southern Florida (Main Campus)
Christopher Newport University	Lynn University	Springfield College	University of Southern California
Clark University	Maine College of Art & Design	St. Lawrence University	University of Southern Maine
Clarkson University	Marist College	Stetson University	University of Toronto
Clemson University	Mary Baldwin University	Stony Brook University	University of Vermont
Coastal Carolina University	Marymount Manhattan College	Swarthmore College	University of Virginia
Colby College	Marymount University	Syracuse University	University of Washington
Colby-Sawyer College	Massachusetts College of Art & Design	Temple University	University of Wisconsin (Madison)
College of Charleston	Massachusetts Institute of Technology	Texas A&M University	Utica University
College of the Holy Cross	McGill University	Texas State University	Vermont Technical College
Colorado State University (Fort Collins)	Merrimack College	Texas Tech University	Villanova University
Columbia College Community College of Vermont	Messiah College	The College of William & Mary	Vincennes University
Concordia University – Montreal	Michigan State University	The Ohio State University (Main Campus)	Virginia Polytechnic Institute
Connecticut College	Middlebury College	The University of Findlay	Washington and Lee University
Cornell University	Minnesota State University (Mankato)	The University of Tampa	Webster University
Curry College	Montana State University	The University of Texas at Austin	Wesleyan University
Dartmouth College	Montserrat College of Art	Trinity College	
DePaul University	Mount Holyoke College	Tufts University	
Dean College	New England College	Union College	
Dickinson College	North Carolina State University	University of Arizona	
Drexel University	North Greenville University	University of British Columbia	
Duke University	Northeastern University	University of California (Davis)	
Eckerd College	Northern VT University-Johnson	University of California (Irvine)	
Elon University	Northern Vermont University (Lyndon)	University of California-Santa Barbara	
Emerson College	Oberlin College	University of California (Santa Cruz)	
Endicott College	Occidental College	University of Colorado Boulder	
Fairfield University	Pace University (New York City)	University of Connecticut	
Fashion Institute of Technology	Penn State University (Abington)	University of Delaware	
Flagler College	Penn State University (University Park)	University of Denver	
Florida Atlantic University	Providence College	University of Florida	
Florida Gulf Coast University	Purdue University	University of Hartford	
Fordham University	Queen's University	University of Hawaii at Manoa	
	Quinnipiac University	University of Illinois at Chicago	
		University of Illinois at Urbana-Champaign	
		University of Kentucky	

## Graduation Rate

The Vermont State Agency of Education defines the graduation rate as the number of students who graduated divided by the senior census count on October 1. The data currently available is as follows:

Year	October 1 Census	Number Graduated	Graduation Rate
2021-2022	219	217	99%



## CO-CURRICULAR PARTICIPATION

Activity	2017-2018 Student Participants	2018-2019 Student Participants	2019-2020 Student Participants	2020-2021 Student Participants	2021-2022 Student Participants
Astronomy Club	-	-	-	20	N/A
Back Country Ski Club	19	11	11	10	N/A
Bass Fishing Club	-	-	-	8	N/A
Book Club	-	-	9	21	N/A
Coalition for Community Service	102	55	36	47	24
Culture & Geography Club			16	24	N/A
Cybersecurity Club	11	12	12	7	N/A
Dance Club	-	-	-	10	N/A
Debate Club	23	13	26	16	N/A
Disc Golf	-	-	-	-	8
Drama—Fall Musical	25	30	63	23	N/A
Dungeons & Dragons Club	-	-	-	22	N/A
Esports	-	-	-	-	22
Future Educators of America	13	7	9	4	9
Investment Club	-	-	16	12	N/A
Journalism Club	-	-	14	11	N/A
Gender Sexuality Alliance	-	-	-	11	N/A
Green Team	-	-	-	-	4
Key Club	20	62	34	13	7
Medical Club	12	21	21	21	N/A

# HIGH SCHOOL DATA ...CONTINUED

## CO-CURRICULAR PARTICIPATION



Activity	2017-2018	2018-2019	2019-2020	2020-2021	2021-2022
	Student Participants	Student Participants	Student Participants	Student Participants	Student Participants
National Honor Society	66	63	83	0	N/A
Ping Pong Club	-	-	-	17	11
Robotics Club	13	16	15	12	13
Rowing Club	18	38	36	36	30
Scholars' Bowl	5	18	25	13	15
Speech Club	18	20	23	9	N/A
Strength & Conditioning Club	-	17	27	12	22
Student Justice Union Club	-	23	32	31	N/A
Student Council	31	31	31	30	N/A
Unified Sports	13	18	16	13	N/A
Yearbook	-	-	-	-	5

The total reflects student participation and does not account for students who may participate in more than one co-curricular activity or who may participate minimally.  
N/A = participation totals not available at time of publication.

# HIGH SCHOOL DATA

## ATHLETIC PARTICIPATION

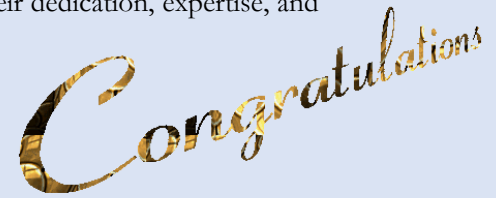


Year	2017-2018	2018-2019	2019-2020	2020-2021	2021-2022
Total School Population	921	921	901		
Girls' Soccer	40	36	34	35	31
Boys' Soccer	59	60	55	57	67
Cheerleading includes BHS	18	14	31	16	13
Field Hockey	43	38	34	35	40
Football includes BHS	45	52	81	50	54
Girls' Golf	31	35	30	17	9
Boys Golf		8	11	8	11
Girls' XC Running	26	18	17	20	22
Boys' XC Running	40	40	30	20	20
Girls Volleyball	31	46	30	17	34
Boys Volleyball	-	-	17	15	19
Fall Sports Sub - Total	333	347	370	311	326
<i>Fall Participation</i>	36%	38%	41%	34%	36%
Girls' Basketball	24	21	22	22	21
Girls' Bowling	5	8	6	4	4
Girls' Gymnastics	8	8	4	4	7
Girls' Alpine Skiing	4	10	7	6	4
Girls' Nordic Skiing	3	3	5	11	8
Girls' Dance Team	38	34	37	28	25
Cheerleading	15	11	12	9	7
Girls' Ice Hockey	19	18	19	22	26
Girls' Indoor Track	30	48	24	0	23
Boys' Basketball	38	34	41	45	40
Boys' Bowling	22	20	24	13	9
Boys' Alpine Skiing	8	17	10	13	13
Boys' Nordic Skiing	10	8	10	6	10
10Boys' Ice Hockey	21	22	19	22	19
Boys Snowboarding	-	-	19	16	14
Boys' Indoor Track	34	36	42	0	23
Winter Sports Sub - Total	287	297	301	229	261
<i>Winter Participation</i>	31%	32%	33%	25%	29%
Softball	27	24	-	21	22
Girls' Track & Field	50	48	-	36	41
Girls' Lacrosse	30	31	-	29	39
Girls' Tennis	19	13	-	18	23
Girls' Ultimate	12	17	-	27	16
Baseball	33	29	-	31	33
Boys' Track & Field	49	50	-	48	39
Boys' Lacrosse	51	39	-	33	36
Boys' Tennis	12	13	-	13	14
Boys' Ultimate	20	38	-	20	31
Spring Sports Sub - Total	303	302	-	276	294
<i>Spring Participation</i>	33%	33%	-	30%	32%

Spring sports were canceled due to COVID-19.

# DISTRICT AWARDS & ACHIEVEMENTS

The District gratefully recognizes the following individuals for their dedication, expertise, and love of students and learning.



## 10 Years of Service

Kathleen Collaro.....	Instructional Coach .....	Orchard School
Timothy Collins .....	Bus Driver .....	District
Sara Doll .....	Speech Language Pathologist .....	Gertrude Chamberlin School
George Lapierre .....	World Languages Teacher .....	High School
Kelly Mahl .....	Elementary Teacher .....	RM Central School
Jennifer McGahey .....	Media Center Assistant .....	RM Central School
Paula Ralston .....	School Psychologist .....	District
Lisa Rundle .....	SEL Coach .....	Gertrude Chamberlin School
Alexis Seraus .....	Head Custodian.....	FHT Middle School
Penpa Sherab .....	Head Custodian.....	High School
Philip Surks .....	Science Teacher.....	High School
Danielle Vincent .....	Elementary Teacher .....	Orchard School

## 20 Years of Service

Les Burdzy .....	Custodian .....	Orchard School
Lynn Kynoch .....	Administrative Asst/Coach .....	High School
Diane Lampman .....	Head Custodian.....	Gertrude Chamberlin
Ryan Navin.....	Social Studies CAS.....	High School
Carolyn Sala.....	Paraeducator .....	Orchard School
Nikki St. Mary.....	Career Development Center Program Coordinator .....	High School
Jim Shields .....	Big Picture Program .....	High School
Chadde Wolf .....	Physical Education Teacher .....	FHT Middle School



## DISTRICT AWARDS & ACHIEVEMENTS



The District gratefully recognizes the following individuals for their dedication, expertise, and love of students and learning.

### 30 Years of Service

David Grippo..... Music Teacher..... FHT Middle School/High School

### 35 Years of Service

Cynthia Tan ..... Elementary Teacher ..... Gertrude Chamberlin

### Dominick Marabella Support Staff Award

Lobsang Norbu ..... Head Custodian..... Orchard School

### SBSD Outstanding Teacher Recognition

Jenna Lewandowski ..... Speech Language Pathologist ..... Orchard School  
Laura Eichorn ..... Mathematics Teacher..... FHT Middle School

### The Theodore Manazir South Burlington School Board Award

Delina Gilroy .....Executive Assistant to Superintendent.....Central Office  
Meg Collins.....Grant Coordinator/Assistant to Executive.....Central Office  
Director of Learning